

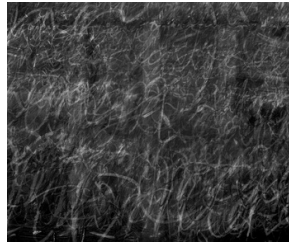
# Idris Khan: Conflicting Lines

All works are listed clockwise from entrance

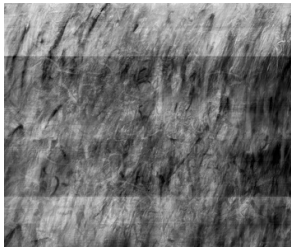
## Gallery I



*A Blanket of White*, 2015  
C-Type Print mounted on aluminium  
165 x 195 cm  
65 x 76 3/4 in  
Edition of 7



*A Field of Dust*, 2015  
Silver Gelatin Print mounted on rag board and aluminium  
50.8 x 61 cm  
20 x 24 in  
Edition of 7

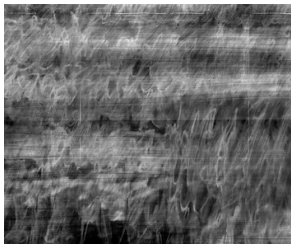


*A Grey Bucket*, 2015  
C-Type Print mounted on aluminium  
165 x 195 cm  
65 x 76 3/4 in  
Edition of 7



*Conflicting Lines*, 2015  
C-Type Print mounted on aluminium  
165 x 195 cm  
65 x 76 3/4 in  
Edition of 7

## Gallery II



*Disappearing Line*, 2015  
Silver Gelatin Print mounted on rag board and aluminium  
50.8 x 61 cm  
20 x 24 in  
Edition of 7



*Church Walk Studio 10*, 2015  
Platinum Palladium Print  
30.5 x 40.6 cm  
12 x 16 in  
Edition of 7



*Church Walk Studio 11*, 2015  
Platinum Palladium Print  
30.5 x 40.6 cm  
12 x 16 in  
Edition of 7



*Church Walk Studio 9*, 2015  
Platinum Palladium Print  
30.5 x 40.6 cm  
12 x 16 in  
Edition of 7



*Church Walk Studio 13*, 2015  
Platinum Palladium Print  
30.5 x 40.6 cm  
12 x 16 in  
Edition of 7

## Windows Maddox Street

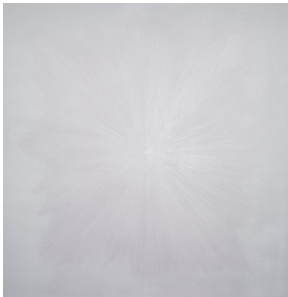


*Church Walk Studio 14*, 2015  
Platinum Palladium Print  
30.5 x 40.6 cm  
12 x 16 in  
Edition of 7

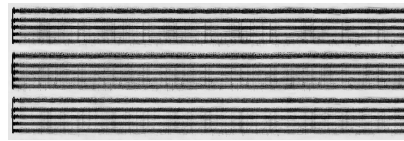


*Church Walk Studio 12*, 2015  
Platinum Palladium Print  
30.5 x 40.6 cm  
12 x 16 in  
Edition of 7

## Viewing Room



*Untitled, White on White*, 2014  
Oil based relief ink on gesso on  
aluminium panel  
235 x 230 x 5.5 cm  
92 1/2 x 90 1/2 x 21 5/8 in



*The Four Seasons*, 2014  
Digital Bromide on Rag  
Board and Aluminium  
117.1 x 347.98 cm  
46 1/8 x 137 in  
Edition of 7



*On A Clear Day*, 2014  
Oil based relief ink on gesso  
and aluminium  
249 x 212 x 10 cm  
98 1/8 x 83 1/2 x 4 in